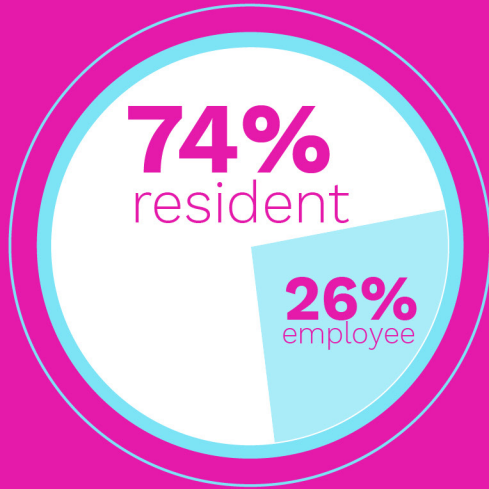
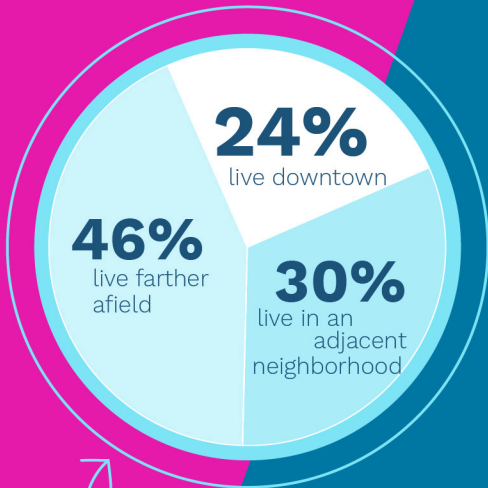
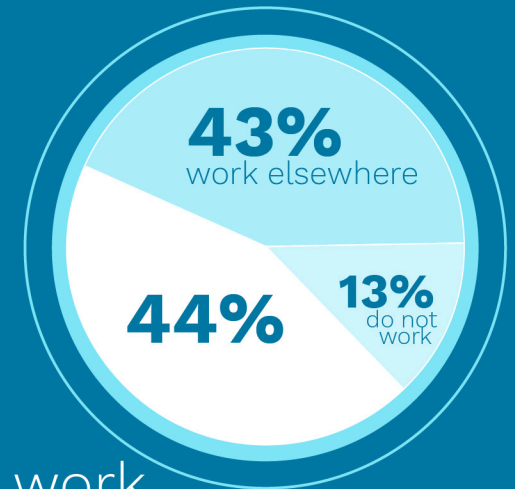
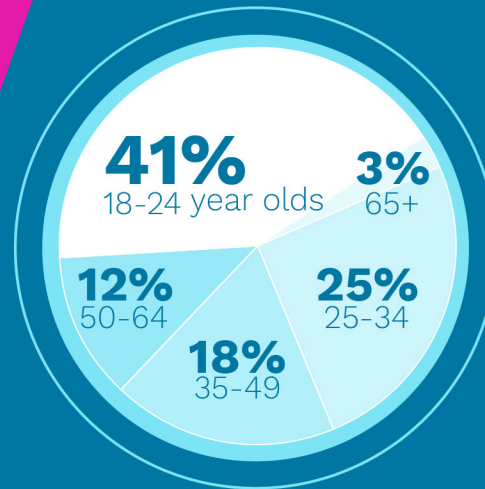


Resident or Employee Survey



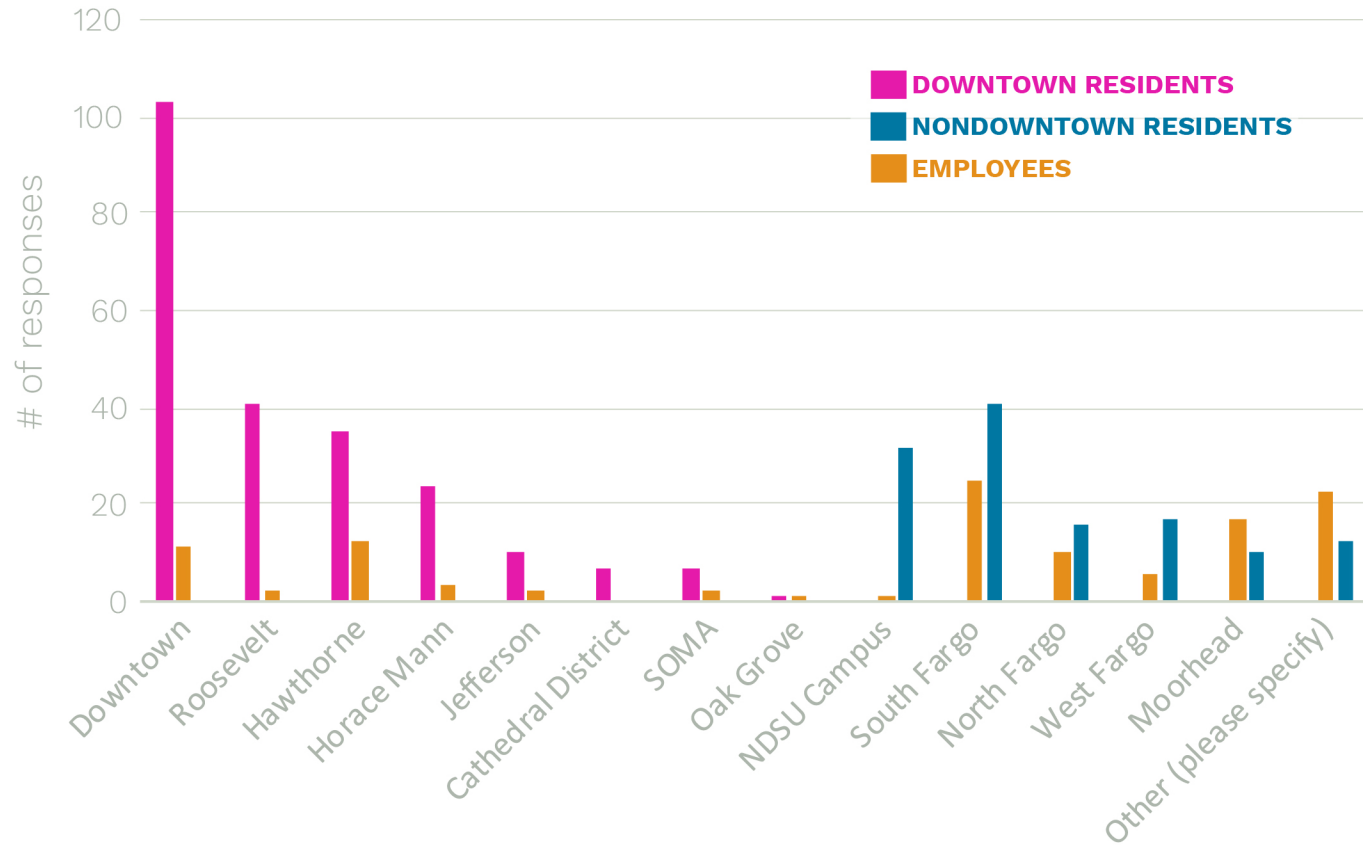
How old are you?



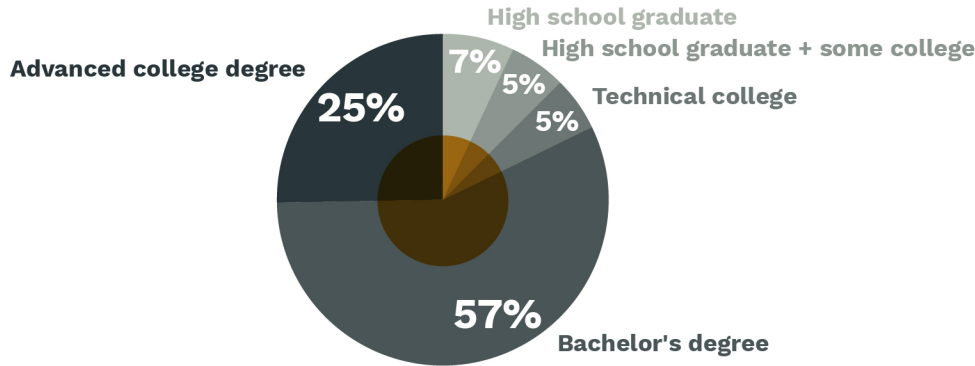
519 total
resident & employee
surveys

ALL SURVEYS

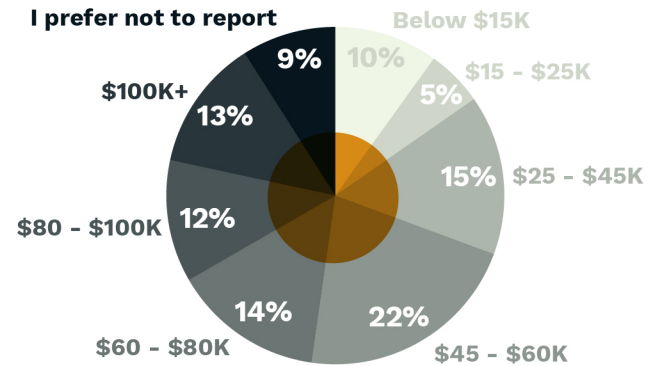
What neighborhood name do you use for the area where you live?



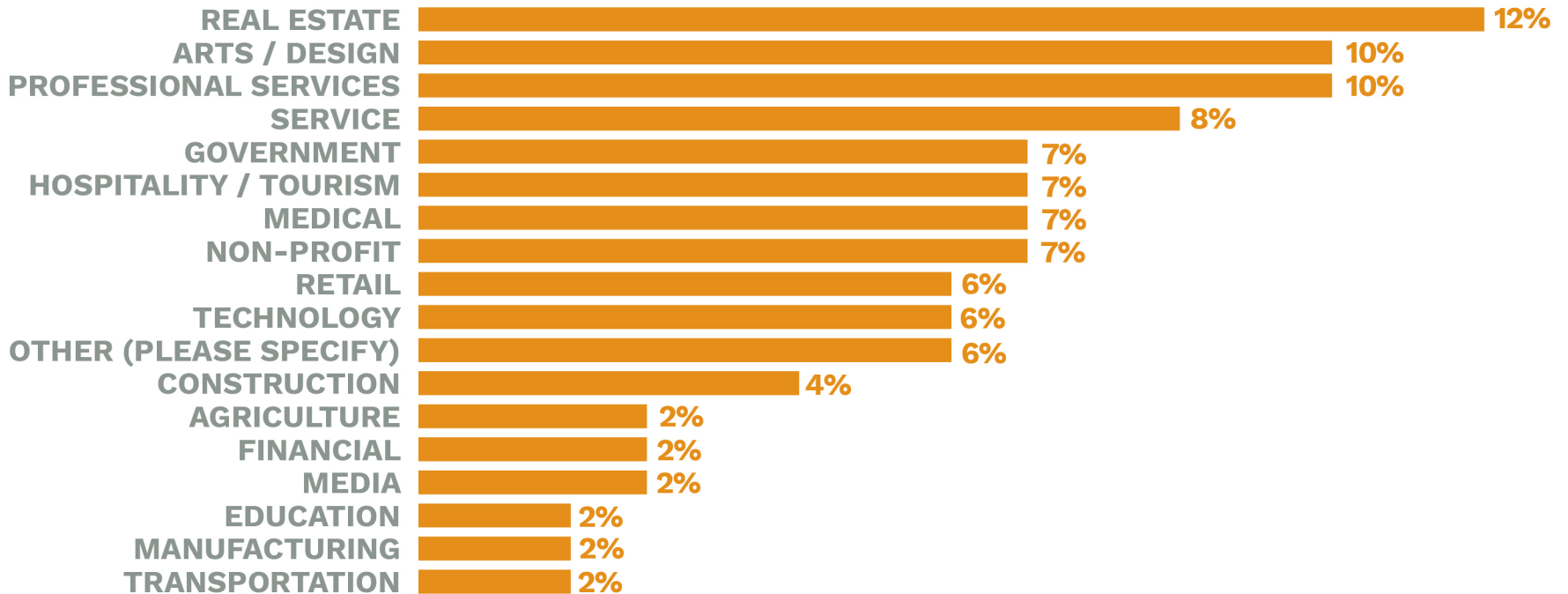
What is your highest level of educational attainment?



What is the income category for your job?



What industry do you work in?



What do you **LIKE** most living, working, or visiting Downtown?

TOP 3

DOWNTOWN RESIDENTS

The local **restaurants and bars**

The area is **walkable / bikeable**

The community **social life** (events, programming, etc.)

NON-DOWNTOWN RESIDENTS

The local **restaurants and bars**

The community **social life** (events, programming, etc.)

The **walkability**

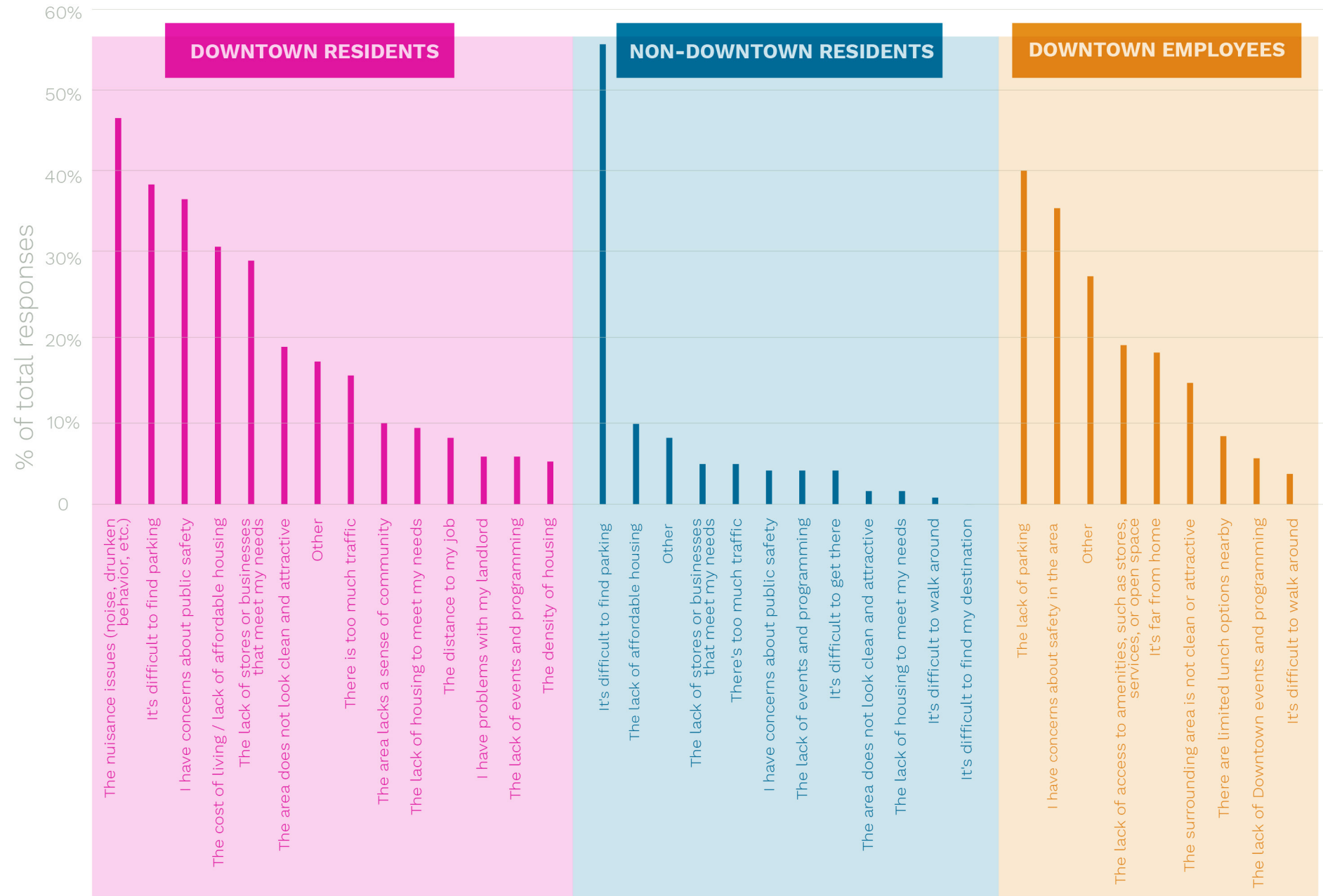
DOWNTOWN EMPLOYEES

The **walkability**

The **lunch options** nearby

Access to Downtown **events and programming**

What do you **dislike** most living, working, or visiting Downtown?



What do you **DISLIKE** most living, working, or visiting Downtown?

TOP 3

DOWNTOWN RESIDENTS

The **nuisance issues** (noise, drunken behavior, etc.)
It's difficult to find **parking**
I have concerns about public **safety**

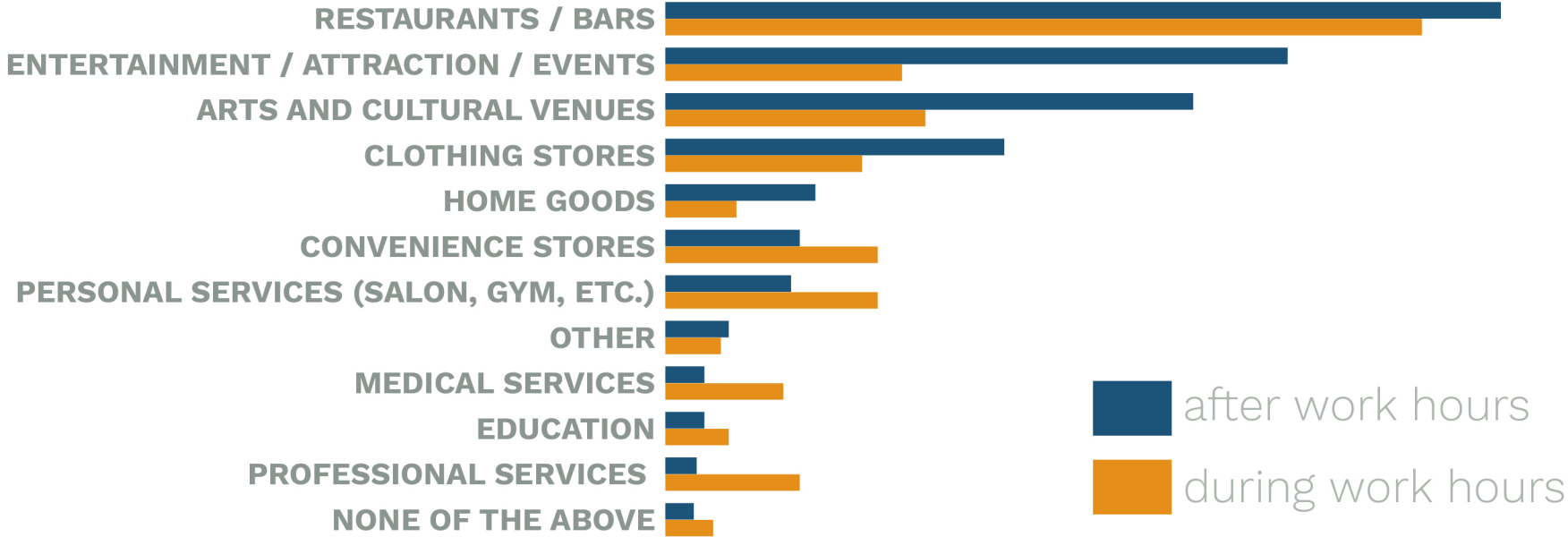
NON-DOWNTOWN RESIDENTS

It's difficult to find **parking**
The lack of **affordable housing**
Other

DOWNTOWN EMPLOYEES

The lack of **parking**
I have concerns about **safety** in the area
Other

What types of businesses or activities do you patronize Downtown?
 Check all that apply.

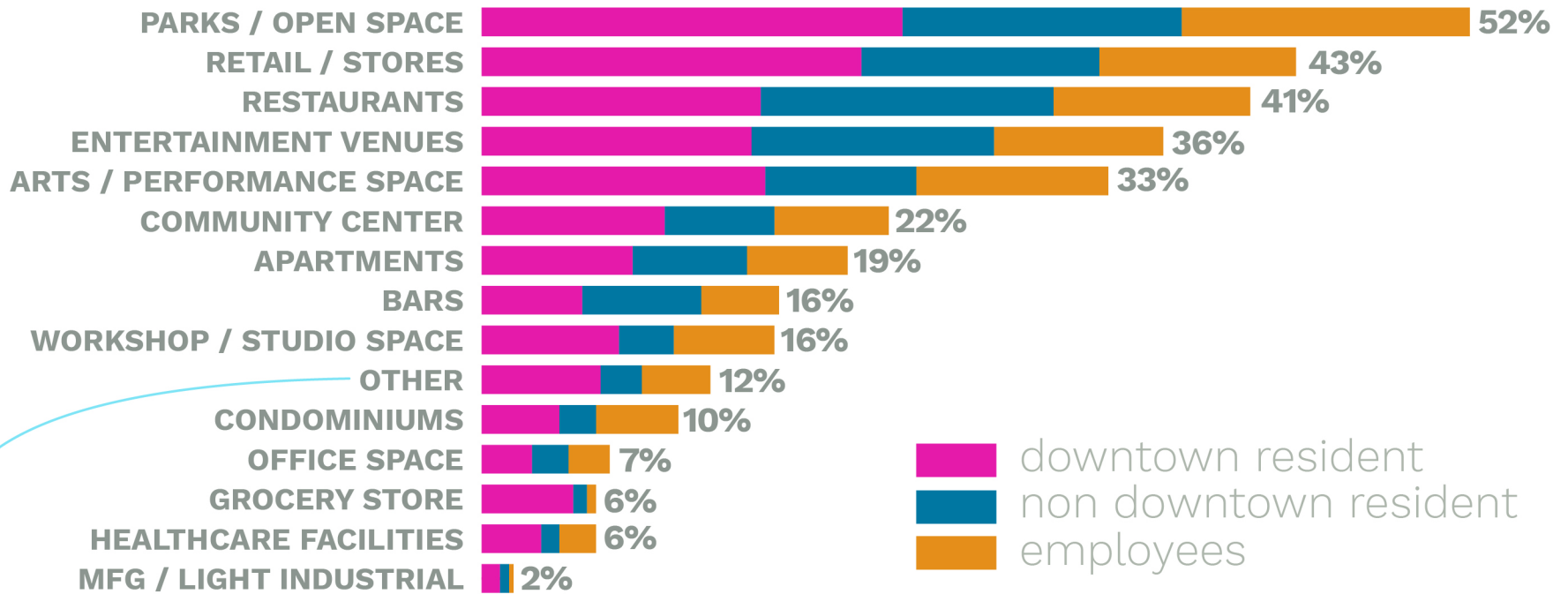


What types of businesses would you likely patronize if they were located Downtown?

TOP 3
 grocery store 45%
 convenience 9%
 pharmacy 9%

*mentioned chain stores: 13%

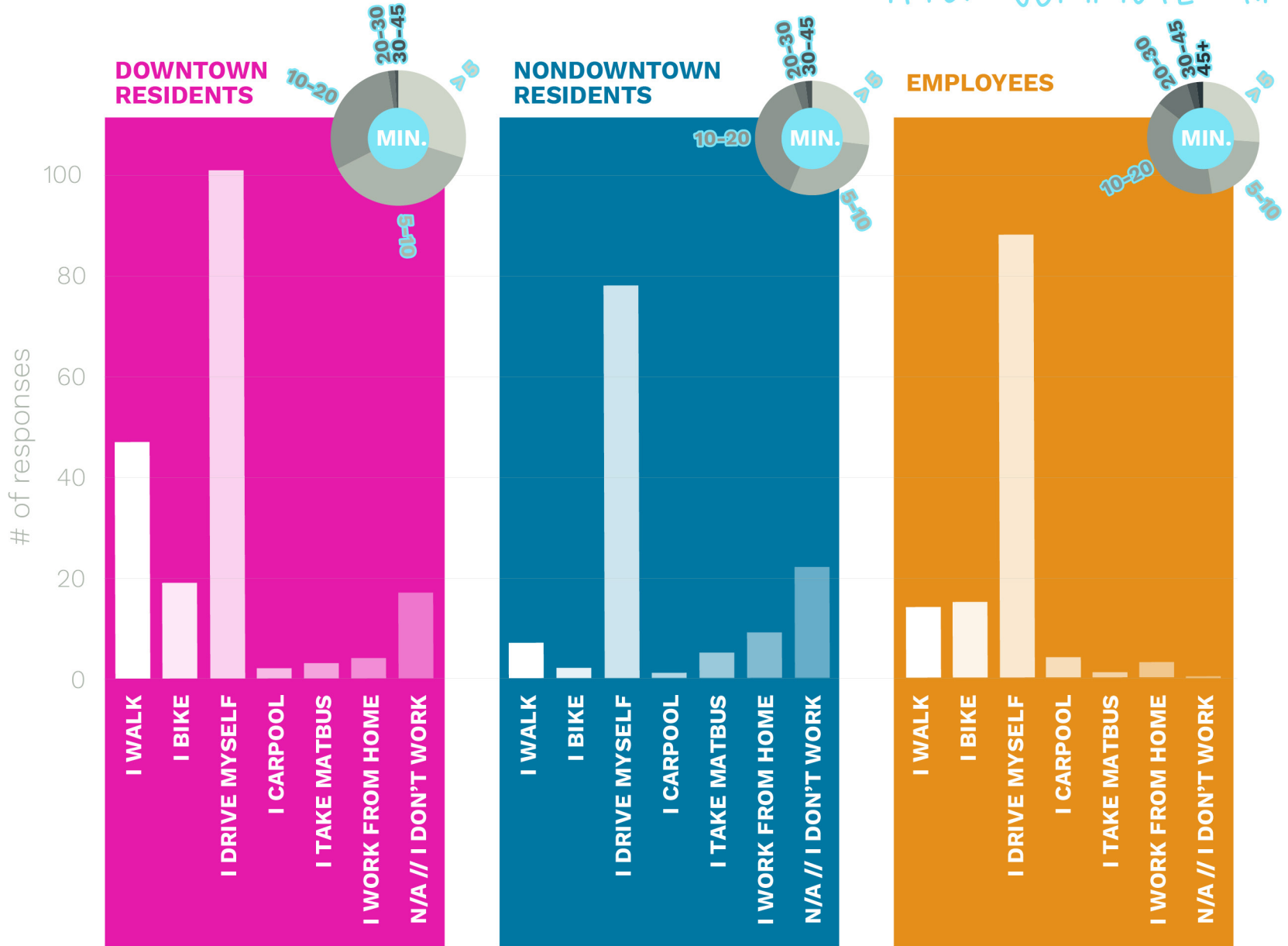
What **types of development or activity** would you most like to see more of Downtown? Select 3.



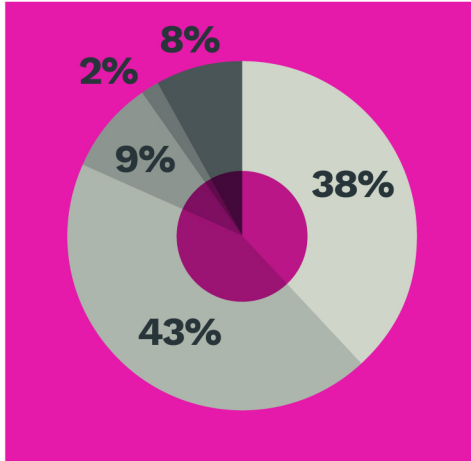
→ AFFORDABLE APARTMENTS, HOTEL, MINI TARGET, GYM, PARKING, DAY TO DAY ITEMS

How do you commute to work?

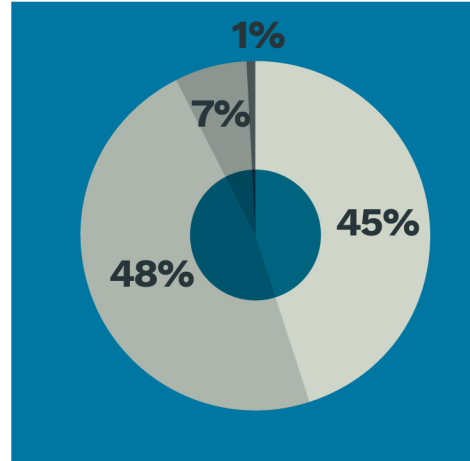
AVG. COMMUTE TIME



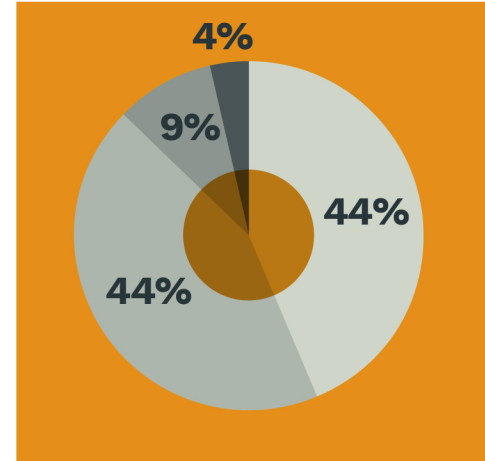
When you drive in Downtown, what do you consider to be a reasonable distance **to walk** from **where you park** to where you're visiting?



DOWNTOWN RESIDENTS



NONDOWNTOWN RESIDENTS

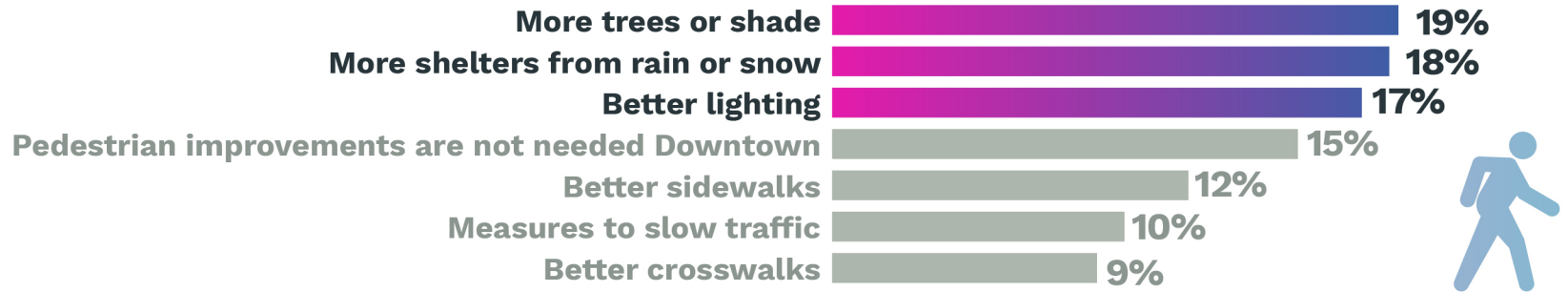


EMPLOYEES

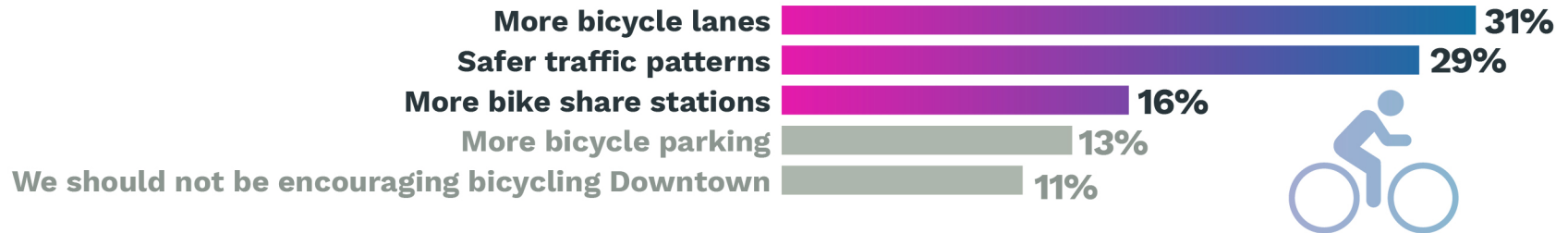
OVERALL, MOST PEOPLE ANSWERED:
5-10 MINUTES



Which improvement would all residents most like to see to encourage more **walking** Downtown?



Which improvement would all residents most like to see to encourage more **bicycling** Downtown?



Which improvement would all residents most like to see to encourage more **public transit** Downtown?

